



REL 212: Science Fiction and Religion

Fall 2023, CRN 61314

Online Asynchronous

Writing Intensive

Professor: Sarah Hadmack
Office: Hale Palanakila 140
Office Hours: by appointment
Email: minnis@hawaii.edu



About This Course-

This course explores and reflects on the presence of religions and religious themes in science fiction films and television shows. Students will also discuss the ethics of robots and forms of artificial intelligence (AI). This course explores the presence of religious themes such as the messianic hero, immortality, free will and determinism, prophecy, evil, mysticism, and apocalypse in films and tv shows including Star Wars, Star Trek, the Matrix, Doctor Who, Superman, Avatar, and more.

WCC: DH and WI, 3 credits

Student Learning Outcomes

After successfully completing this course, you will be able to:

1. Identify the presence of the major religious motifs in science fiction films and television shows.

2. Analyze the hero archetype (the monomyth) in religious literature and science fiction media.
3. Investigate the ways in which science fiction constitutes contemporary religious myth-making.
4. Examine the influence and impact that artificial intelligence will have on society.

Writing Intensive Hallmarks (WI)

This course fulfills a WI requirement. The hallmarks of WI courses are:

1. W1. The class uses writing to promote the learning of course materials.
2. W2. The class provides interaction between the instructor and students while students do assigned writing.
3. W3. Written assignments contribute significantly to each student's course grade.
4. W4. The class requires students to do a substantial amount of writing—a minimum of 4,000 words, or about 16 pages.
5. W5. To allow for meaningful professor-student interaction on each student's writing, the class is restricted to 20 students.

One conference with the professor is required during the course.

Course Format

I'm so excited you're here! This course is structured to broaden your understanding of the ways in which religious motifs, the hero's journey, and ethical issues are deeply embedded in science fiction media. Each week you can expect to do the following:

1. Read my lecture notes and/or assigned articles
2. Watch science fiction media
3. Answer questions through Laulima polls, Quizzes, Padlet, and/or Google Jamboards.
4. Make progress on your writing assignments.
5. Discuss and debate the topics in Forums and/or Padlet.



Most tasks will be due on Thursdays by 11:55pm

The four major writing assignments are due on Fridays by 11:55pm.

Required Materials

All required resources are freely available. Textbook readings, my notes, and videos are all embedded in the weekly lessons in [Laulima](#). Please ensure that you have all of the following before Week 1:

Hardware/software

- Daily access to a desktop or laptop computer (**Using a smartphone or tablet is insufficient.**) You may rent a laptop for the entire semester from the WCC library. To reserve one go to this [library webpage](#).
- Reliable high-speed Internet connection
- A recent version of the [Chrome](#) or [Firefox](#) browsers (free) Please use either of these browsers when using Laulima.
- A word-processing program, such as web-based [Google Docs](#) (free with UH username and most recommended), [Word](#) (free student version), or [Pages](#) (free with Apple hardware).
- Presentation program, such as [Powerpoint](#) (free student version), [Keynote](#) (free with Apple hardware), or web-based [Google Slides](#) (free with UH username).
- [Zoom](#) video conferencing tool (free)
- [Padlet](#) account (free)
- [Adobe \(Acrobat\) Reader](#) (free)

Course Policies

Communication

Participating in our Course

While most of your coursework will be completed independent of your classmates, you will have ample opportunities to work collaboratively through Lulima Forums, Google Docs, Padlet, and Jamboards (Prior knowledge of these tools is NOT required.) We learn more when exposed to diverse viewpoints, we challenge ourselves when we have to articulate and sometimes defend our knowledge, and group activities develop a sense of community and responsibility for one another. Thus, this course prizes collaborative learning. Feel free to bounce ideas off of one another when working on an assignment or answering review questions, just be sure that your answers are not written identically!

Contacting the Instructor

You can contact me via email or through the Forums tool on Lulima. Common courtesy is greatly appreciated!- please review this syllabus to see if your question has already been answered. For other questions and communication, I will do my best to reply to you within 48 hours Monday-Friday. Please note: I do not regularly check my email on the weekends.

Attendance & Grading

Attendance/Participation

Participating in our Lulima course is very important. Plan to login to Lulima at least three times per week to read the materials, complete assignments, and discuss the materials with your classmates. Please be sure to read all of my emails since it will be my main form of communication with you. You can read past emails by clicking on the "email archive" tab on the left menu bar in Lulima.

Late Work/ Make-up Policy

Students are provided with three virtual 'No Questions Asked' (NQA) coupons that enable them to make up an assignment or quiz up to one week past the due date. Anytime that you submit an assignment late or take a quiz late, then I will automatically apply one of your NQA coupons to it. If you use all three of your NQA coupons, future late work will result in an automatic zero. Coupons may not be shared or replicated. Unused coupons will be counted toward extra credit if the student submitted all assignments and quizzes on time.

While I talk quite a bit about god, gods, and goddesses, I certainly don't want to play one! I am not the judge of your priorities. Thus, you do not need to provide me with a doctor's note or an explanation of your personal emergency. YOU decide when you need to use a NQA coupon. However, use them wisely since no further late work will be accepted, regardless of reason, once you have used the three NQA coupons.

Grading

Assessments and Weighting:

<i>Star Wars Empire Strikes Back</i> Reflection Paper (4pgs).....	15%
Ethics Analysis Paper (4pgs).....	15%
Artificial Intelligence Argumentative Paper (4pgs)	15%
Film/Episode/Book Creative Writing Assignment (4pgs).....	15%
Quizzes, Polls, Email replies.....	20%
Posting and Commenting in Forums, Padlets, Jamboards, Google docs, etc.....	20%
TOTAL.....	100%

Letter Grades and Percentage Ranges

You will receive a letter grade based on the following scale:

A = 90-100%

B = 80-89%

C = 70-69%

D = 60-69%

F = 0-59%

N= The 'N' grade indicates that the student has worked conscientiously, attended regularly, finished all work, fulfilled course responsibilities, and has made measurable progress. However, either the student has not achieved the minimal student learning outcomes and is not prepared to succeed at the next level, or the student has made consistent progress in class but is unable to complete the class due to extenuating circumstances, such as major health, personal, or family emergencies.

Descriptions of Course Tasks and Assessments

Readings, Viewings, and Notetaking

Each week you will read my notes, read an article or two, and watch science fiction media. Most people's retention of the material greatly diminishes in only a day if they didn't take notes or share what they read. Note taking improves your ability to learn, understand, and remember the material. Smart note taking ensures that you are an active participant in your learning, requires you to think about what you are reading, helps you to form connections between topics, and serves as an organized, concise review for studying. There are several note taking strategies! I recommend using either the [Cornell method](#), [Mapping method](#), or the [Outlining method](#). If you Google these note-taking methods, you can find plenty of examples online. I have provided you with one guide for each.

The films/shows in this course should be considered primary texts for the course. You are required to watch all films and shows in this course, even if you have watched them before or are familiar with the plot. When you watched the film/show before, I doubt you were looking for religious themes or the hero archetype so you will, very likely, see something new when viewing it in this course. Hopefully you will find this to be a most enjoyable requirement! After all, we are watching classics in science fiction.

Quizzes, Polls, Email Replies

You will demonstrate your understanding of the week's materials by taking quizzes and answering polls in Lulima. Understanding of course content, as well as effective communication, will be demonstrated by replying to my emails.

Discussion Questions, Debates, Games: Participating in Forums, Padlets, Jamboards, Google Docs, etc.

Most weeks I will provide you with review and discussion questions in Lulima on the assigned readings and viewings. We will discuss those questions through several different programs: Lulima Forums, Padlet, Google Docs, Google Jamboards, Flipgrid, and/or AnswerGarden. (Prior knowledge of these tools is NOT required.)

Writing Assignments

1. Reflection Paper: Star Wars Episode V: Empire Strikes Back paper- 5 full, typed pages (12pt font, double spaced, one inch margins)
Your paper should address all of the following, in addition to your own unique insights.
 - How is Obi-Wan able to communicate with Luke? How might this be interpreted in a religious context?
 - What spiritual/religious teachings does Yoda impart to Luke?
 - Is the Force a tool for divining the future? Explain.
 - Describe the presence of prophecy, mysticism, evil, immortality, and free will vs. determinism within the film.
 - Describe who fits the monomyth/hero archetype more closely in this film: Luke Skywalker or Han Solo.
 - DUE: Week 6: Sep. 29

2. Ethics Analysis Paper: 4 full, typed pages (12pt font, double spaced, one-inch margins) During class we will discuss various ethical models and frameworks such as the Virtue Approach, Utilitarian Approach, Common Good Approach, etc. Choosing your own science fiction media, describe and analyze which ethical model(s) are present in the film/episode/book.
- summarize the film, episode, or book you chose in no more than a page
 - describe the main tension in the episode, what is at stake, which characters must make an ethical choice, and which ethical model(s) are at play by providing specific examples of their dialogue and/or actions
 - analyze the characters' choices. Do you think that was the right ethical model to use? Why or why not? Demonstrate your knowledge of the main benefits and drawbacks of more than two ethical models for behavior.
 - DUE: Week 8: Oct. 13

3. Argumentative Paper: Artificial Intelligence – 4 full, typed pages (12pt font, double spaced, one-inch margins) Write an argumentative paper on Artificial Intelligence (A.I.). Describe how A.I. will affect one of the following topics-
- Job replacements
 - Robotic warfare
 - Identifying fact from fiction
 - Accessibility issues in programming A.I.
 - Privacy Rights
 - Plagiarism
 - Personal security
 - Legal perspectives- who is liable for errors?
 - Emotional bonds between humans and social robots
 - Robot caregivers- medical field
 - What defines personhood? Should robots have human rights?
 - Roboethics

Argue how A.I. should be developed/controlled/freed/handled in regard to the topic(s) you chose. This assignment also requires an annotated bibliography. Cite a minimum of four scholarly articles/books on your topic. For each source:

- cite it in proper MLA format
 - provide an annotation. Your annotation might be content-based (describe what the reader can learn by reading this source) or your annotation could be process-based (share how you found this source and which parts were especially instructive to your work.) For books, cite specific chapters and page numbers you used. For websites, provide the URL you used, and, if the webpage is long, copy/paste the specific sections you used.
 - describe why this source is [credible](#). Include a sentence that begins with: "This source is [highly/moderately] credible because _____. " For example, "This source is highly credible because the author is listed, her credentials support her work on this topic, her works cited is relevant to the topic, the information is current, and I did not detect any bias or agenda other than to educate."
 - Prove your sources' credibility by answering these questions for each source: Who wrote it? What are their credentials? When was it written? What makes this source authoritative for your topic? Why does this source exist? For more guidance, see the [6 Ws](#).
 - DUE: Week 13: Nov. 17
4. Film/Episode/Book Creative Writing Assignment – 4 full, typed pages (12pt font, double spaced, one-inch margins)

- You may not use any of the films/shows used in class. This is your chance to write about other sci-fi films, shows, or books you love that weren't covered in the course!
- Select your film/show/book wisely (that is, it can't be just any science fiction; it needs to engage with religion or moral/ethical issues).
- Feel free to make your own personal selection. However, if you're unsure of what to choose-
 - Some films/shows that could work nicely include: Wonder Woman, Shang-chi, Doctor Strange, Star Trek, Battlestar Galactica, The Avengers, Contact, X-Men, Heroes, the Flash, Stargate, A.I, Person of Interest, Upload, Jurassic Park, Minority Report, the Orville, etc.
 - Some science fiction books that would work nicely include: *Dune* by Frank Herbert, *Fahrenheit 451* by Ray Bradbury, *Hyperion* by Dan Simmons, *Mistborn* by Brandon Sanderson, *The Shape-changer's Wife* by Sharon Shinn, etc.
- Some possible topics to discuss in your paper:
 - How does the film/show/book address ethical and moral dilemmas of modern society?
 - How does it reflect religious diversity?
 - How do these 'cultural texts' constitute and influence religious reality?
 - How do the writers view the line between rationalism, skepticism, belief, and religion?
 - The major religious motifs
 - Whether or not the main character follows the stages of the monomyth

For more guidelines on this paper, please see Laulima.

DUE: Week 15: Dec. 1

A note on plagiarism: This is a WI course and plagiarism is treated seriously. You need to cite all of your sources in proper [MLA format](#). If you don't know how to cite a source in MLA format, then Google it, ask me, or go to the Writing Center for help! Ignorance is no excuse. If I find that you quoted someone else's work verbatim without using quotation marks or giving the author credit then you will receive an automatic F grade on the assignment.

Course Schedule

Please review the course schedule below where you will find the dates, course topics, and assessments to be completed each week.

Specific topics to be covered each week, requirements and expectations for each assignment, and additional details for each week are available in the weekly lesson plans on Laulima. The following schedule is subject to change. Should changes occur, you will be notified by email.

Most tasks will be due on Thursdays by 11:55pm, except for your four papers, which are due on Fridays by 11:55pm.

Week 1, Aug. 21-25: Introduction to the Course and Getting to Know One Another

Topics: Introducing the course and one another; introduction to the science fiction genre

Tasks:

- Introduce yourself in the discussion forum and respond to two of your classmates' posts.
- Jamboard: Sci Fi Faves

Week 2, Aug. 28- Sep. 1: Introducing the Major Religious Motifs and the Hero Archetype/Monomyth

Topics: the major religious motifs; the Hero Archetype/Monomyth; what makes a hero?

Tasks:

- Quiz: Syllabus
- Read my notes and Chapter 3 of *The Hero with a Thousand Faces* by Joseph Campbell
- Quiz Question: Types of Heroes
- Forum: Discuss the reading
- Jamboard: Writing- Strengths and Weaknesses

Week 3, Sep. 4-8: Superman

Topics: the creation of *Superman*; Superman through the years; the religious motifs applied to Superman; Superman, Jesus Christ, and Moses

Tasks:

- Watch the lecture on Religious Motifs
- Read and take notes on "Superman: A Popular Culture Messiah" by Ken Schenck
- Watch the film *Superman* (1978)
- Padlet: Discuss the major religious motifs in the film
- Discussion: AI Generated Content



Week 4, Sep. 11-15: Superman

Topics: Superman and the Monomyth; superhero characteristics, mythic elements, and religious yearnings

Tasks:

- Read and take notes on "Introduction: Superhero Myth and the Restoration of Paradise" by B.J. Oropeza
- Watch Hero Archetypes
- Quiz: Oropeza reading
- Google Doc: identifying phases of the monomyth for Superman

Week 5, Sep. 18-22: Star Wars

Topics: the mythology of Star Wars; religious interpretations of the Force

Tasks:

- Religious Motifs Review Quiz
- Begin reading the article to which you were assigned
- Watch the film *Star Wars A New Hope*
- Monomyth: *Star Wars A New Hope*
- Watch the interview *The Mythology of Star Wars with George Lucas and Bill Moyers*
- Poll: Lucas and Moyers interview
- Jamboard: what makes a good reflection paper?

Week 6, Sep. 25-29: Star Wars

Topics: Star Wars universe; prayer and meditation; what constitutes religion; the Jedi Knight religion(?)

Tasks:

- Watch the film *Star Wars: The Empire Strikes Back*
- Write a reflection paper answering all of the questions in Laulima (due Friday night by 11:55pm)
- Continue reading the article that was assigned to you in Week 5
- Read the article "The Spiritual Message Hidden in Star Wars"

Week 7, Oct. 2-6: Star Wars

Topics: Star Wars and world religions; debate

Tasks:

- Complete the reading that was assigned to you in Week 5
- Debate in Forums: Is Star Wars most akin to Daoism, Buddhism, Hinduism, or Christianity?
- Read the news articles about Jedi Knight faith / Jediism
- Watch: Jediism lecture & CNN's "The spirituality of Star Wars"
- Answer the questions on the lesson page



Week 8, Oct. 9-13: Buddha, Jesus, and Ethical Models

Topics: Buddha, Jesus, and the Monomyth; ethical models and frameworks

Tasks:

- Complete the readings on Buddha and Jesus
- Complete the "A Framework for Ethical Decision Making" reading
- Watch: Crash Course Ethics video
- Quiz: Ethics
- Submit your Ethics Analysis Paper (due Friday by 11:55pm)
- Sign up for a conference time on Friday of next week

Week 9, Oct. 16-20: Conferences

Tasks:

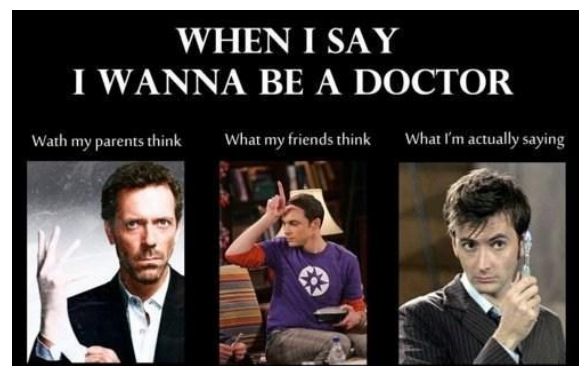
- Forum: Ethics of Superman and Star Wars characters
- Watch: Buddha, Jesus, and the Monomyth
- Conferences will be held over Zoom on Friday. We will discuss your Ethics Analysis Paper and your remaining two papers for this semester.

Week 10, Oct. 23-27: Doctor Who

Topics: the many faces and types of deities associated with Doctor Who, what constitutes religion; Whovians and Doctor Who as religion?

Tasks:

- Doctor Who notes
- Watch the assigned Doctor Who episode
- Watch: "Is Doctor Who A Religion"
- Quiz: Collaborative Jamboard on the episode



Week 11, Oct. 30-Nov. 3: Star Trek

Topics: application of the ethical models

Tasks:

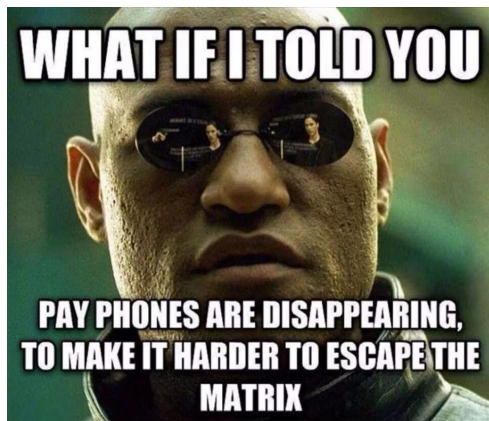
- Watch: the assigned Star Trek episodes
- Forum: Star Trek

Week 12, Nov. 6-10: The Matrix and Artificial Intelligence

Topics: the Matrix; introduction to artificial intelligence and ethical issues

Tasks:

- Watch the *Matrix*
- Read the article: Neo: Messianic Superhero of the Matrix
- Forum: Matrix questions
- Start working on the Artificial Intelligence Argumentative Paper



Week 13, Nov. 13-17: The Matrix and Artificial Intelligence

Topics: ethics of artificial intelligence; what it means to be human

Tasks:

- Contribute a definition to the Jamboard
- Read the articles
- Watch one of the movies or an episode of the shows listed in Lailima
- Post in the discussion forum on artificial intelligence
- Watch: "Humans Need Not Apply"
- Post in the "Humans Need Not Apply" Jamboard
- Submit the Artificial Intelligence Argumentative Paper (due Friday by 11:55pm)

Week 14, Nov. 20-24: Artificial Intelligence

Topics: ethics of artificial intelligence

Tasks:

- Read the article about artificial intelligence
- Quiz on the articles from this week and the previous week
- Prepare arguments for the debate
- Start working on the Film/Episode/Book Creative Writing Assignment

Week 15, Nov. 27- Dec. 1: Avatar

Topics: Avatar and nature spirituality; different ways of seeing- political communities, ethical responsibilities, and humanity

Tasks:

- Read a chapter from the book *Avatar and Nature Spirituality* by Bron Taylor
- Forum: Avatar
- Watch the film Avatar
- Forum: Avatar Film Questions
- Submit the Film/Episode/Book Creative Writing Assignment (due Friday by 11:55pm)



Week 16, Dec. 4-8: Wrapping Up

Topics: sharing what we created for the last writing assignment; concluding remarks

Tasks:

- Present your Film/Episode/Book Creative Writing Assignment in the Discussion Forum
- Comment on three of your classmates' Creative Writing assignments
- Conclusions and questions for future investigation

Final Exam Week:

Tasks:

- Submit your final Creative Writing assignment after making changes based on your classmates' feedback

Congratulations! You have completed the course.

Additional Information

College Policies

Academic Honesty:

Students are expected to act with personal integrity, to respect other students' opinions and property, and to help create an academic environment in which discussion is encouraged. Students are expected not to engage or tolerate acts of plagiarism: cheating, copying, fabrication of citations, or other acts of academic dishonesty. Plagiarism is treated seriously in this course. If you are quoting someone verbatim, then you must use quotation marks and cite the source immediately after the quotation in parenthetical form, (author's last name, page number). If you are unsure whether or not you are citing sources correctly, please ask me. Ignorance is no excuse. Students charged with academic dishonesty face serious consequences that range from an F grade for the assignment to an F grade for the course.

AI-generated work statement:

It is expected that you do your own work in this course. There is great value to thinking through the assignments individually. Writing is a wonderful tool to process the information you learn and to form your own opinions. Putting an assignment prompt into an AI app such as ChatGPT and presenting its answer as your own is plagiarism (cheating) and grounds for failing the course.

Appropriate use of AI when working on tasks in this course:



- feel free to use spell and grammar check tools such as Grammarly
- feel free to use AI recommendations for rephrasing sentences you first drafted yourself
- feel free to use AI apps to ask for clarification or additional explanation on a point you are confused by
- feel free to use AI tools to ask for source recommendations to then read and further understand a topic
- feel free to use it for brainstorming assistance and language support

Inappropriate use of AI when working on tasks in this course:



- do not use full sentences or paragraphs produced by an AI app as your own work. (This is plagiarism).
- do not have the AI answer the assignment (paper, quiz, or other course question) for you and then substitute different words for some of its words. This is patch-writing, a form of cheating.

Disabilities Accommodation:

If you have a physical, sensory, health, cognitive, or mental health disability that could limit your ability to fully participate in this class, you are encouraged to contact the Disability Specialist Counselor to discuss reasonable accommodations that will help you succeed in this class. Roy Inouye can be reached at 808-235-7453, royinouye@hawaii.edu, or you may stop by Hale Kako'o 106 for more information.

Title IX:

Title IX prohibits discrimination on the basis of sex in education programs and activities that receive federal financial assistance. Specifically, Title IX prohibits sex discrimination; sexual harassment and gender-based harassment, including harassment based on actual or perceived sex, gender, sexual orientation, gender identity, or gender expression; sexual assault; sexual exploitation; domestic violence; dating violence; and stalking. Windward Community College is committed to the pursuit of equal education. If you or someone you know has experienced sex discrimination or gender-based violence, WCC has resources to support you. To speak with someone confidentially, please go to: [Title IX | Windward Community](#) to find the appropriate contact person.

Alternate Contact Information:

If you are unable to contact the instructor, have questions that your instructor cannot answer, or for any other issues, please contact the Academic Affairs Office in Alakai 121, 808-235-7422, wccaa@hawaii.edu

Services:

Windward is one of the most supportive colleges! Please don't be shy! Utilize all of the wonderful services that are available to help you succeed. For information on counseling/advising, careers and student employment, tutoring (including services such as the Writing Center, Math Lab, Speech Lab, test proctoring, Trio, etc.), HINET, peer mentors, childcare, and more please see: [Services For Students | Windward Community](#)

Extra Credit

There are a few extra credit assignments sprinkled into the Lualaba Lesson plans. Extra credit can also be earned by writing additional Film/Episode/Book Creative Writing Assignments. For instructions, see the "Writing Assignments" section of this syllabus. All extra credit must be received by December 8, 2023.

Syllabus Change Policy:

Information contained in the course syllabus may be subject to change with reasonable advance notice, as deemed appropriate by the instructor. Updates to the syllabus will be communicated via email.

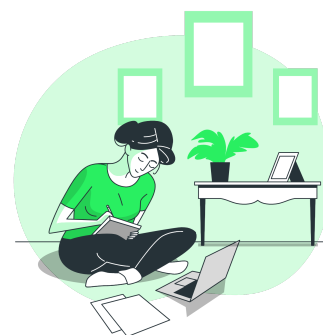
Mission Statement:

'O keia ka wā kūpono e ho'onui ai ka 'ike me ka ho'omaopopo i kō Hawai'i mau ho'oilina waiwai. Aia nō ho'i ma ke Kulanui Kaiāulu o ke Ko'olau nā papahana hou o nā 'ike 'akeakamai a me nā hana no'eau. Me ke kuleana ko'iko'i e ho'ohiki ke Kulanui e kāko'o a e ho'okumu i ala e hiki kē kōkua i ka ho'onui 'ike a nā kānaka maoli. Na mākou nō e ho'olako, kāko'o a paipai i nā Ko'olau a kō O'ahu a'e me nā hana no'eau ākea, ka ho'ona'auao 'oihana a me ka ho'onui 'ike ma ke kaiāulu — hō'a'ano a e ho'oulu i nā haumāna i ka po'okela.

Windward Community College offers innovative programs in the arts and sciences and opportunities to gain knowledge and understanding of Hawai'i and its unique heritage. With a special commitment to support the access and educational needs of Native Hawaiians, we provide the Ko'olau region of O'ahu and beyond with liberal arts, career and lifelong learning in a supportive and challenging environment — inspiring students to excellence.

Secrets of Success

1. Keep up with the readings, viewings, and note taking. Since the course is set up to discuss the films, shows, and readings, if you do not read or complete the viewings you will feel completely lost and not have an enriching educational experience. Additionally, by completing the readings and viewings, you will be well prepared for the discussion questions, writing assignments, debates, and quizzes.
2. Only check social media and your other favorite websites at set times each day. You're working on your computer for this course. Instagram, TikTok, Reddit, and more are only a click away. Classwork is hard! Reading streams and looking at photos is fun and easy! Oh, and that great feeling we get every time someone acknowledges something we posted... I get it. Distraction is everywhere. Here are some things you can do to avoid temptation. Choose which ones can work for you given your family's needs and your specific distractions:
 - a. do not leave any distracting websites open on your computer when you're completing class work.
 - b. leave your phone in the next room. I assume that if there's an emergency then someone will call me, not text. Thus, I do not go to my phone while I'm working unless it rings.
 - c. if you have a smartwatch that vibrates every time you get a notification, take it off during your work time.
 - d. designate specific times in which you allow yourself to go to your favorite websites. Whatever you tend to check out or click on incessantly, try scheduling in certain blocks of time for that activity and do not check them out at other times.
3. Stay organized. Use a planner! Put important deadlines for assignments from all of your courses' syllabi into the planner. Create a weekly schedule with your school and work hours. Be sure to schedule in blocks of time when you plan to read, watch, study, and complete assignments.
4. Contact me if you have any questions. Never think that your question is "too stupid" to ask. We are all on a life-long journey in which we learn and synthesize information everyday, act according to that knowledge, trust what has become reliable wisdom, and reassess other knowledge with newfound information. I'm not out to trick you; I want you to succeed! I am here to help you. Let me know how I can make this the best educational experience for you.



Let's get started!

