

GEOG 102: World Regional Geography WCC Summer Online Class

03

Online DE (CRN: 60013)

INSTRUCTOR: Toshi Ikagawa, Ph.D.

OFFICE: Na'auao 116 at WCC

OFFICE HOURS: Online via e-mail, or by appointment

TELEPHONE: 236-9216; ikagawa@hawaii.edu

EFFECTIVE DATE: Summer 2012

(Updated on: July 1, 2012)

NOTE: To start GEOG 102, you **MUST** complete the following **3 tasks** (10 extra points) within the first **2 weeks**. They are designed to make you familiar with the procedures you need to use **Laulima**:

NOTE: If you have any questions about this course, please e-mail me using my UH e-mail address (ikagawa@hawaii.edu), Always include "**GEOG 102**" in the subject field of your e-mail, so that I will notice it immediately. This will be automatically done if you use the **Maitool** in Laulima. DO NOT use "Private Messages" in Laulima.

1. After carefully reading this syllabus, download the **Syllabus Acceptance Form** from the Laulima Resources page, fill it up, and submit it via Assignments tool (into "Syllabus Acceptance") by the end of the 3rd week. You can access the Resources and Assignments pages by clicking an appropriate name in the Table of Contents (**TOC**) on the left column. Without the acceptance, you are **NOT** allowed to participate in this course (i.e., dismissed with a failing grade). (No points assigned)
 2. Access the **Discussions** page from **TOC**, click **Class Discussion**, and open **Introduce yourself** topic. You can introduce yourself to the class here. Please, however, refrain from subjects that are not appropriate in public discussion. (5 points)
 3. Go a **Testing Center** and open the **Tests and Reviews** page from **TOC**. Open **00-Pre-survey** (45 questions) and answer the questions (The Proctor at the Testing Center will put in the Password for you). This survey is used for a Student Learning Outcome assessment purpose only. It is **NOT** an exam (although it is in a test format, and not anonymous for the purpose of giving points to individuals), thus if you take it, you will receive the full credit. (5 points)
-

When you complete the above 3 tasks, you will receive total of extra 10 points. Note that your points will be posted in the **Gradebook** under “Syllabus Acceptance.” Without the submission of your syllabus acceptance, the points will not be posted.

WINDWARD COMMUNITY COLLEGE MISSION STATEMENT

Windward Community College offers innovative programs in the arts and sciences and opportunities to gain knowledge and understanding of Hawai'i and its unique heritage.

With a special commitment to support the access and educational needs of Native Hawaiians, we provide O'ahu's Ko'olau region and beyond with liberal arts, career and lifelong learning in a supportive and challenging environment — inspiring students to excellence.

CATALOG DESCRIPTION

Geography 102 is a survey of the world's major cultural regions. Environmental, cultural, political, and economic characteristics of each region and regional interactions are explored from a geographic perspective.

Activities Required at Scheduled Times Other Than Class Times

This is an online course, thus has no scheduled times.

STUDENT LEARNING OUTCOMES

At the completion of the course, the student will be able to:

1. Demonstrate knowledge of basic geographic terms, locations, concepts, theories, and methodology (Knowledge).
2. Demonstrating an understanding of historical, social and environmental processes shaping the world's major cultural regions (Analysis).
3. Apply the knowledge of basic geographic terms, locations, concepts, theories, and methodology to critically explain current world events and issues and daily events (Application).

UH E-MAIL

Occasionally, a rush message is disseminated via the UH e-mail. Please check your UH e-mail often. Useful information is available at the following:

[Forwarding Your UH Mail to Another Email Account](http://windward.hawaii.edu/facstaff/ikagawa-t/Forwarding%20your%20UH%20Mail.pdf)
(<http://windward.hawaii.edu/facstaff/ikagawa-t/Forwarding%20your%20UH%20Mail.pdf>)

REQUIREMENTS COURSE SATISFIES

At WCC: Meets AA degree Social Science requirements

At UHM: Meets General Education Core Diversification Requirements (DS);
At UH Manoa, GEOG 102 is a **Foundation Course** (FG-B)

RECOMMENDED BASIC SKILLS LEVEL

Ability to read and write at a college level; basic computer skills

LEARNING RESOURCES

Required Textbook: *Globalization and Diversity: Geography of a Changing World* (3rd Ed) by Rowntree, et. al., Prentice Hall (Available at WCC Bookstore)

COURSE TASKS

Dear Geography Student:

Welcome to the Geography 102 course, **World Regional (Physical/Cultural) Geography**. In this course, we examine the geographic forces working to shape the complex features of world environments and civilizations. Our purpose is to understand the link between the natural world and societies. To enhance our geographic understanding, we explore the 12 geographic regions of the world and their interconnectedness, physical and human contents, assets and liabilities, links and barriers, and potentials and prospects.

Assignments:

It is assumed that you read and understand all the assigned part of the textbook.

Participation:

Participation is mandatory.

Also, any changes in the content/material/schedule/procedure related to the class, announced on Lualima will stand, even if you are not aware. It is your responsibility to obtain such information from Lualima site, or any other sources.

ASSESSMENT TASKS AND GRADING

Student Evaluation:

1. You must complete the **3 tasks** mentioned above (10 extra points)

Requirement 1: You must complete (1) Syllabus acceptance, (2) Introduce yourself and (3) Pre-survey. If you do not complete these initial tasks, you will not be allowed to participate in this class thereafter.

2. There will be three **Exams** (40 points each), 13 **Map Quizzes** (3 points each) and **Participation** (30 points) for the evaluation (Total 189 points). Review for Map Quizzes is

available in the **Map Quiz Reviews** page (Place Names for map quizzes; also available in the Resources).

Requirement 2: You must achieve **60%** or better of the total of exams and participation to pass the course. Also you **must** take the Pre-survey mentioned above at the beginning of the semester (NOT graded, but **MUST** take it).

3. There will be a mandatory **Capstone Quiz** near the end of the semester (extra points according to your achievement). Review for the Capstone Quiz is available in the **Capstone Quiz Reviews** page (Key Concepts and Ideas; also available in the Resources). Locate places in the review, and understand (not just memorize their definitions) the concepts and ideas listed. Take this requirement seriously.

Requirement 3: You must achieve **70%** or better for the survey to pass the course.

4. If you fail to meet one or both of the above two requirements (only if the results of the Capstone Quiz is 50.0-69.9%), there will be a **Makeup Exam** during the Final's Week (See the Flowchart below). Makeup Exam covers materials for the three previous exams (This is not a mere makeup for the Capstone quiz).

Requirement 4: To pass the course, you must achieve **80%** or better.

5. **Participation** (via Discussion) will be used to evaluate each student's achievement of course objectives listed above. Students missing discussion regularly (i.e. more than **10%** of possible number of entries), cannot be assessed for these objectives and therefore will **not** be able to pass the course. Normally 60 entries required.

Requirement 5: No more than **10%** missing discussion entries

NOTE: Requirement 5 is eased for the **Summer Class**. But please participate in the online discussion as much as possible. Your participation will be considered as **extra credit** points.

Please mark your calendar now.

Tasks	Material Covered	Date
Pre-Survey	Multiple choice questions about the regional geography	1 st — 2 nd weeks on Laulima
Map Quiz	Matching questions based on "GEOG 102 Place Names" list (Check due date for each quiz on Laulima TT&S page)	3 (or 2) quizzes weekly (1 st — 5 th weeks) on Laulima (NOT proctored, so you can take it at home)
Exam 1	Multiple choice questions for Textbook: Chapters 1–5	3 rd week on Laulima
Exam 2	Multiple choice questions for Textbook: Chapters 6–10	4 th week on Laulima

Exam 3	Multiple choice questions for Textbook: Chapters 11–14	5 th week on Laulima
Capstone Quiz	Multiple choice questions from Lectures (based on “ GEOG 102 Key Concepts & Ideas ”)	5 th -- 6 th week on Laulima
Makeup Exam	Multiple choice questions for Textbook: Chapters 1—14	6 th weeks on Laulima
Discussion	Discussion on the topic of the week	Reasonable entries* Considered as extra credit

*: “Reasonable” means that a single-line comments such as “That’s great!” will not count. Use your common sense, please.

NOTE 1: Exact open and due dates of each exam/quiz are available on **Tasks, Tests & Surveys** page on [Laulima](#). Exams, etc. are due at **3 p.m.** of the due date, not at the time of a testing center closes.

NOTE 2: Each exam includes multiple-choice questions, including true/false questions. When you study, it is strongly recommended to check review questions. Review questions are available on [Laulima](#).

ABSOLUTELY IMPORTANT NOTE 3: Due to complicated and difficult to solve **technical** problems, some **review questions** may be reflecting old and out-of-date information. For the **exam** purpose, please pretend they are correct.

NOTE 4: No personal items, including **electronic device** (such as a cell phone and iPad), are allowed during the proctored assignments.

NOTE 5: No reference materials, including other Laulima pages of the class, are allowed when you take proctored exams, etc.

How to access [Laulima](#)

1. Go to the [Laulima](#) entry page at:

<https://laulima.hawaii.edu/portal>

2. Log in using your UH Banner ID and password.

3. Select the class from the “**My Workspace**” bar near the top and click.

4. On the left side, there is the table of contents (Home, Syllabus, Tests & Quizzes, Resources, etc.). Click to access.

NOTE: The “proctored” **exams/survey/quiz** can be only accessible at The Testing Center (TTC) during the [designated period](#). The proctor at TTC will enter password for you. You can take each exam **ONLY** once.

Academic dishonesty: (SERIOUS WARNING!!)

Academic dishonesty such as cheating and plagiarism that may occur in this class will be severely punished. It most likely will result in immediate dismissal from the class. In other words, "DON'T DO IT" even if you have noble reasons to do so. It is NOT worth a try it in this class.

Grading uses the standard scale:

A: 90.0-100.0%, B: 80.0-89.9%; C: 70.0-79.9%, D: 60.0-69.9%, F: 0-59.9%.
For Cr/NC options, Incomplete ("I" grade), and "W" grade, see the WCC College Catalog.
There is no "N" grade in this class.

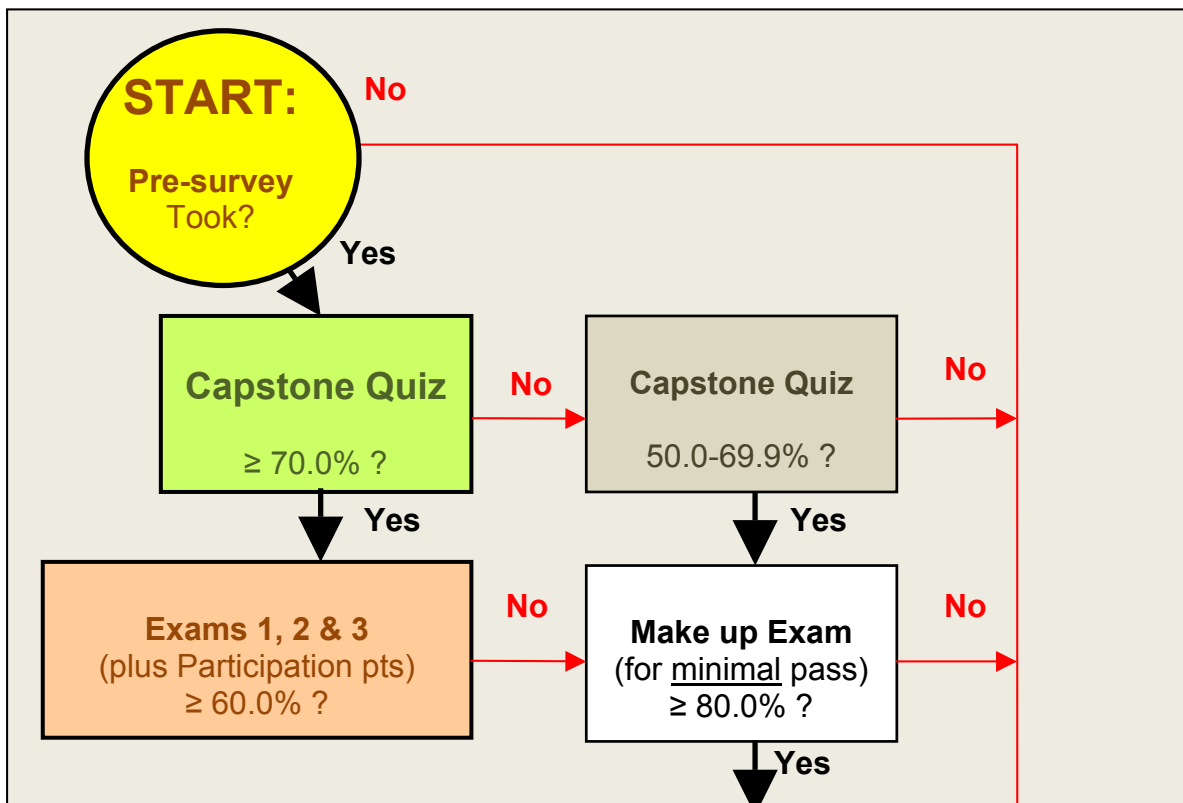
NOTE:

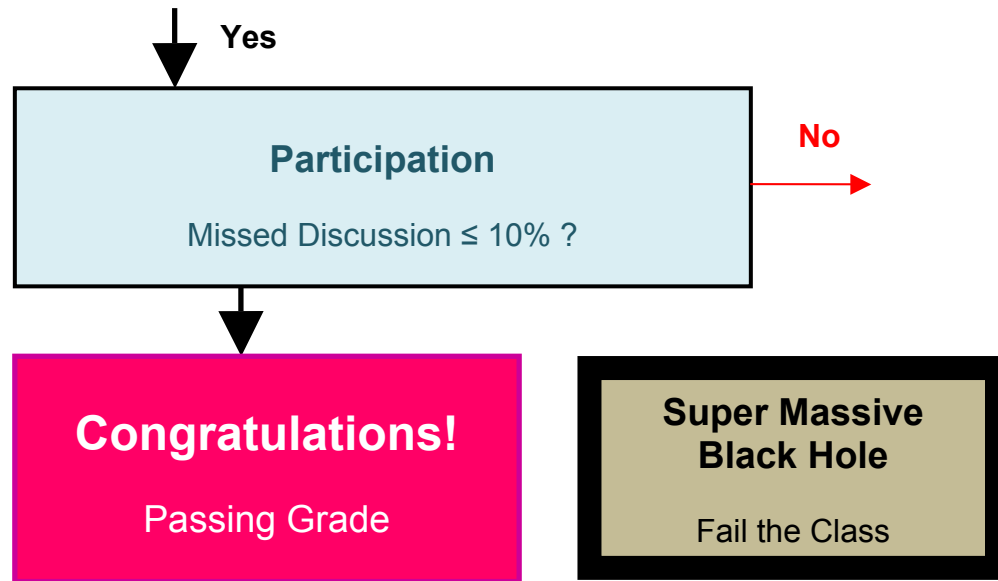
1. There are extra credit opportunities:
(1) First 3 tasks.
(2) Online weekly discussions
(3) Extra credit quiz
2. There is NO make-ups for each missed exams, except the last **Makeup Exam** mentioned above for the entire course.

GEOG 102 Grading Flowchart

Grading involves the following:

1. Pre-Survey (plus Syllabus acceptance and Introduce yourself)
2. Exams 1, 2 & 3 (plus Participation points)
3. Capstone Quiz
4. Participation (**This requirement is eased for the Summer class**)
5. Makeup Exam





NOTE: If you have any questions about this course, please e-mail me using my UH e-mail address (lkagawa@hawaii.edu), Always include “**GEOG 102**” in the subject field of your e-mail, so that I will notice it immediately. This will be automatically done if you use the **Maitool** in Laulima. DO NOT use “Private Messages” in Laulima.

Secrets of Success: Two key factors are especially important

- (1) **Self-motivation:** Because this is an online course, nobody will push you to do the work. Thus, self-motivation is a key factor of success in this course.
- (2) **Communication:** You are not alone. Continuous and open discussion among all participants is strongly recommended. You can use the “Class Discussion” pages available in the Discussions tool of Laulima to communicate with each other. Group work and corroboration is encouraged (i.e., help each other).

Chapter review (textbook)

- (1) Read the assigned pages of the textbook. Then go to the **Printable Reviews** page and study the review questions for the chapter (PDF format files are also available in **Resources** page).

To access automated reviews, from TOC, click **Tests and Reviews**. You see Review Ch01, Review Ch02, etc. listed.

NOTE: You can access automated Reviews as many time as you wish. However, once an exam period starts, the corresponding review page will be closed. So, be sure to review questions ahead of the exam period. (NOTE: PDF printable versions will remain available in Resources)

Exams (online):

(1) You will take your **3 exams** via Lulima at a Testing Center (**TTC**) on Windward Community College campus by the Due Dates.

! You can take each exam **ONLY** once.

NOTE: If necessary, you can arrange to take exams at other designated [testing sites](#). Please contact the instructor to set up your testing site.

The list of locations is found at:

http://www.hawaii.edu/dl/faculty/prep/proctor_office.html

Discussion (online):

(1) Like you did in "Introduce Yourself" exercise, post your Report (i.e. your reactions, opinions, etc.) in the appropriate topic area in the Class Discussions section of Discussions by the due date. For example, you can report What you think, why this way, what can we do, etc.

WARNING: Please do NOT share the Discussions tool with a third party. Any violation of this confidentiality will lead you to dismissal from this course, at least.

You can seek help from your fellow students by posting your problems in the **Class Discussions** section. It is strongly encouraged that you help each other.

To access Class Discussions:

Log in to Lulima → Go to GEOG 102 page
TOC > Discussions and Private Messages Tools

The Discussions opens. Go to Class Discussion. Click on the appropriate topic and compose your message. Your report should NOT exceed 250 words.

You can add your picture, or any picture you like (of course, nothing obscene or offensive, please), in Discussion and Private Messages, My Profile. Go to "Avatar" at the bottom of the page. Please use rather small pictures.

To compose your report, an easy way is to type your report using MS Word or other word processor, and then copy and paste it in a message. Don't forget your Name.

Also, be sure to Reply to at least one entry in the Discussions. In other words, you write your reaction to at least one person's report. You will write **FOUR** entries in the Discussion for each week's topic. Again, you are strongly encouraged to assist your fellow students.

! Discussion for each topic remains open until the end of the week (Saturday). Be sure to report and reply within this time period.

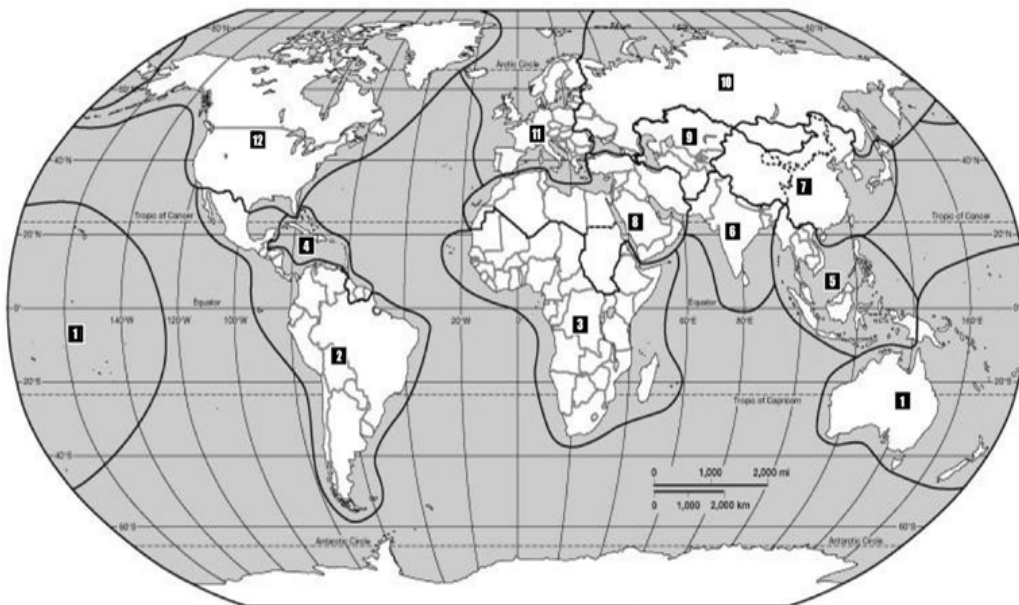
NOTE: If you have any questions about this course, please e-mail me using my UH e-mail address (lkagawa@hawaii.edu), Always include “**GEOG 102**” in the subject field of your e-mail, so that I will notice it immediately. This will be automatically done if you use the **Maitool** in Laulima. DO NOT use “Private Messages” in Laulima.

MAP QUIZ EXPLANATIONS

Below is an example of **Map Quiz**. Please read this section carefully because matching choices are a bit confusing.

EXAMPLE: Map Ch.01 & 02 Match with the regions with the number on the map.

Map Ch.01 & 02 Match with the regions with the number on the map.



Copyright © 2005 Pearson Prentice Hall, Inc.

	Match		Choice
1.	The Russian Domain	A.	5
2.	The Caribbean	B.	10
3.	East Asia	C.	11
4.	North America	D.	8
5.	South Asia	E.	6
6.	Latin America	F.	12
7.	Europe	G.	3
8.	North Africa and Southwest Asia	H.	7
9.	Sub-Saharan Africa	I.	1
10.	Australia and Oceania	J.	4
11.	Southeast Asia	K.	2

EXPLANATIONS:

1. A **map quiz** contains a **map** with numbers and alphabets on it (note: this example only contains numbers) and **questions** and matching **choices** are listed below the map.
2. The **Choice** column is located far right. The numbers (and alphabets in other map quizzes) listed in this column correspond to the numbers and alphabets on the **map**.
3. The “**A, B, C....**” listed left of the **Choice** column are the selections you will choose as answers.
4. Let’s match the first question, “**1. Russian Domain.**” On the map, Russian Domain is numbered “**10**” (if you cannot see it well in the map above, trust me). The “**Choice 10**” is listed as the selection “**B. 10.**” So your answer (selection) for the first question is “**B.**”
5. When a **map** contains both numbers and alphabets, it becomes a bit confusing. So, please remember this example.

COURSE CONTENT

World Regional Geography (GEOG 102) Schedule

Week (Date) Subjects (Reading assignment of Textbook)

Week	Subject (Textbook)	Contents (Region)
1	Introduction (Ch 1)	Introduction to the class, maps, scales, syllabus Physical geography, Natural processes
	General geography (Ch 2)	Cultural geography, Concepts in Geography Geography of Hawai'i
	North America (Ch 3)	North America
2	Latin America (Ch 4)	Latin America
	The Caribbean (Ch 5)	The Caribbean
	Sub-Saharan Africa (Ch 6)	Sub-Saharan Africa
3	SW Asia & N Africa (Ch 7)	SW Asia & N Africa

	Europe (Ch 8)	Europe
	Russia (Ch 9)	Russia
4	Central Asia (Ch 10)	Central Asia
	East Asia (Ch 11)	East Asia
	South Asia (Ch 12)	South Asia
5	SE Asia (Ch 13)	SE Asia
	Australia (Ch 14)	Australia
6	Synthesis	Summary

NOTE: Schedule/subjects may change without prior notice.

Disabilities Accommodation Statement

If you have a physical, sensory, health, cognitive, or mental health disability that could limit your ability to fully participate in this class, you are encouraged to contact the Disability Specialist Counselor to discuss reasonable accommodations that will help you succeed in this class. Ann Lemke can be reached at 235-7448, lemke@hawaii.edu, or you may stop by Hale 'Akoakoa 213 for more information.

Additional Information

Legal assumptions:

It is hereby assumed that you will strictly follow all and any reasonable procedures/ethics, etc. that are enforced in this academic institution. Refer to the Student Conduct Code (<http://www.hawaii.edu/apis/ep/e7/e7208.pdf>) for the details.